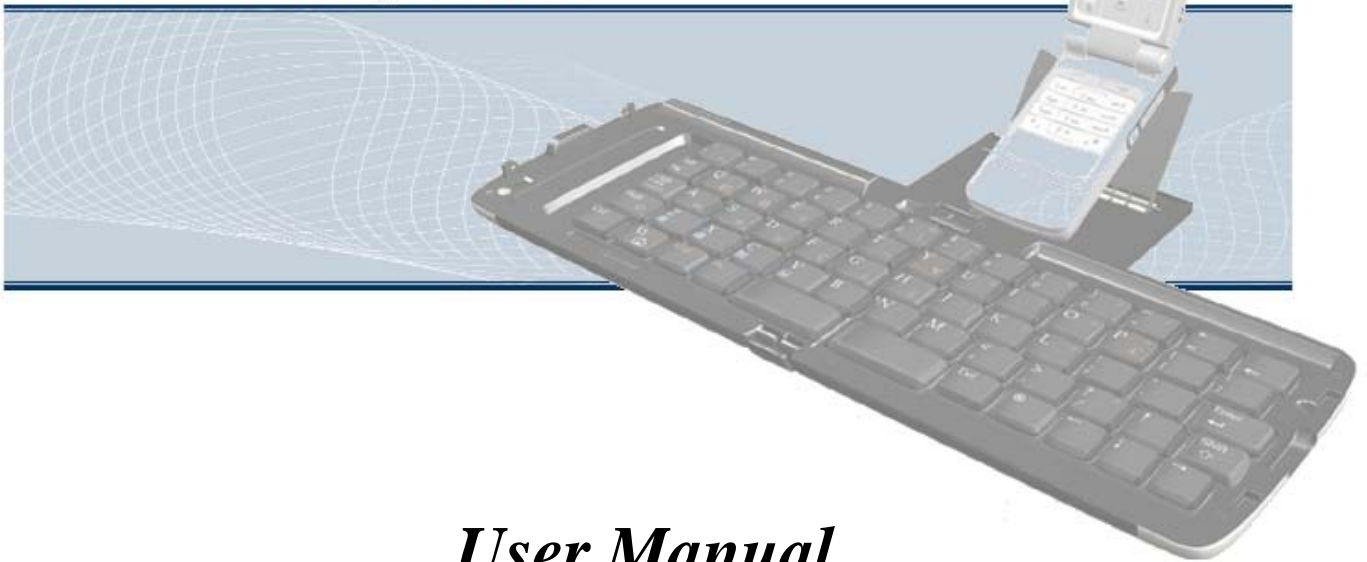


Bluetooth Keyboard



User Manual For Windows Mobile 2003-Based Smartphones

Support:

Microsoft Smartphones 2003	
Orange	SPV C500
	SPV E200
O2	Xphone
T-Mobile	SDA MUSIC
Dopod	565
	575
	585
Audiovox	SMT 5600

Manufacturer's Disclaimer Statement

The information in this document is subject to change without notice and does not represent a commitment on the part of the vendor. No warranty or representation, either expressed or implied, is made with respect to the quality, accuracy or fitness for any particular purpose of this document. The manufacturer reserves the right to make changes to the content of this document and/or the products associated with it at any time without obligation to notify any person or organization of such changes. In no event will the manufacturer be liable for direct, indirect, special, incidental or consequential damages arising out of the use or inability to use this product or documentation, even if advised of the possibility of such damages. This document contains materials protected by copyright. All rights are reserved. No part of this manual may be reproduced or transmitted in any form, by any means or for any purpose without expressed written consent of its authors. Product names appearing in this document are mentioned for identification purposes only. All trademarks, product names or brand names appearing in this document are registered property of their respective owner.

Table of Contents

◆ Introduction of Bluetooth Keyboard	4
➤ Keyboard Features	4
➤ Keyboard Setting Up	5
◆ Driver Installation / Upgrading / Removing	6
➤ System Requirements	6
➤ Before to Use	6
➤ How to Install/Upgrade/ Remove the Bluetooth keyboard Driver	6
◆ Configuring Bluetooth Keyboard	8
◆ The Illustration of " Config " Page	9
➤ Active Keyboard	9
➤ Reconnection	9
➤ Typing Repeat Rate	10
➤ Typing Repeat Delay	10
➤ Keyboard Test	10
◆ The Illustration of " Function " Page	11
◆ The Illustration of " About " Page	11
◆ Function key and the Combination keys	12
➤ Launching Applications	12
➤ Other Function Key	12
➤ Symbol Characters	13
➤ Latin Characters	14
➤ Calculator Functions	15
◆ Bluetooth Keyboard Status LED	16
◆ Product Specifications	16
◆ Appendix A : Troubleshooting	17

Introduction of Bluetooth Keyboard

➤ Keyboard Features

Welcome use the *Bluetooth Keyboard*

Cradle :

The SmartPhone & PDA cradle of the keyboard

Battery Cover :

Allow to place two AAA battery in it.

Keyboard lock :

The lock is able to fix the keyboard in unfolding position.



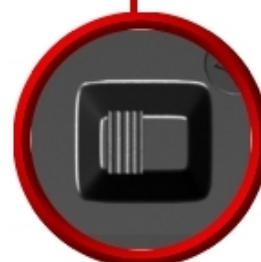
Power & the LED signal :

Power turn upward :
Power on
Power turn downward :
Power off



Slide shaft :

Pull in the right direction to leave keypad no gap for typing.



Cradle Lock :

Please unlock the lock when you are folding your cradle.

➤ **Keyboard Setting Up**



Notes :

- * Please turn the keyboard on first.
- * Once the LED flash orange light or no light, change the battery.



- * Before folding the keyboard, make sure the keyboard is unlock and the cradle is inserted back into the keyboard.

Driver Installation/Upgrading/Remove

➤ System Requirements

- Windows Mobile 2003-Based Smartphone with built-in Bluetooth.
- At least 60 KB of free memory on your Smartphone.
- A computer with the Microsoft Windows 2000/XP operating system.
- A synchronizing program on your computer, such as Microsoft ActiveSync 3.6 or higher, for copying files to your Smartphone.

➤ Before to Use

- Check the batteries status of Bluetooth keyboard.
(Open the switch to check the green light on the keyboard.)
- Disable other previously installed keyboard application which will use Bluetooth on your Smartphone.

➤ How to Install / Upgrade / Remove the Bluetooth keyboard Driver?

■ Installation

- * Connect your Microsoft Smartphone through infrared/cable for ActiveSync with the computer.
- * Insert Bluetooth Universal Keyboard CD into computer's CD-ROM drive.
- * Follow the instruction on screen to complete the installation.
- * After the Bluetooth keyboard driver is installed successfully and the Microsoft Smartphone is reset, you can find this Bluetooth keyboard icon is showed on the Home Menu of the mobile device. (Figure 1)

■ Upgrading

Please check the Agent's website from time to time to check if any new driver is released.

(Note: Please remove the old driver out first, and then install the last one into your device.)



Figure 1

■ **Removing**

Step 1 : Turn the driver off

Step 2 : Tap Start -> Settings -> Remove Programs, (Figure 2) choose the "Bluetooth BTKeybd" and click the **Yes** button. (Figure 3)

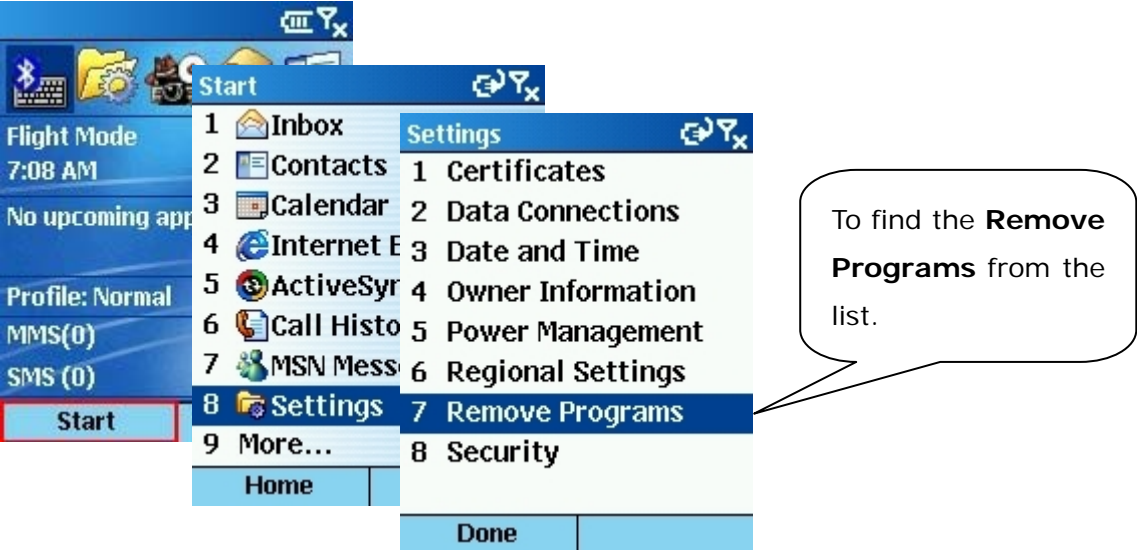


Figure 2

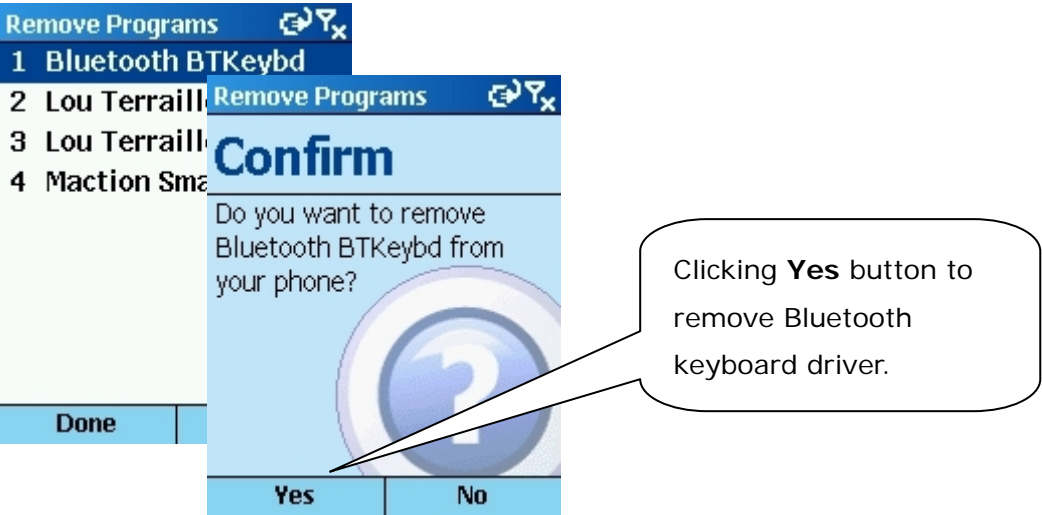


Figure 3

Configuring Bluetooth Keyboard

- When you click the “**BTKeybd**” icon, you will see three pages “**Config**”, “**Function**”, “**About**”. (Figure 4)

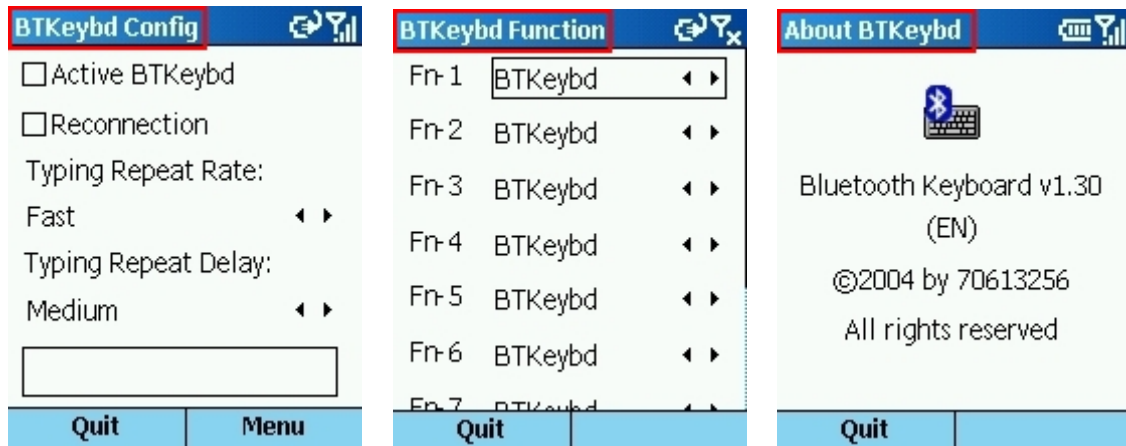


Figure 4

- **“Config” Page :**
There are including:
“Active keyboard”, “Reconnection”, “Typing Repeat Rate”, “Typing Repeat Delay”, “Keyboard Test”.
- **“Function” Page :**
This page provides ten user-definable function keys as **Hot Keys**.
- **“About” Page :**
Provides the version of the driver installed in your handheld device.

The Illustration of “ Config ” Page

➤ **Active Keyboard**

■ **How to connect the Bluetooth keyboard with your device??**

Step 1:

Turn the Bluetooth keyboard on, the LED will flash orange for 1 second, then turn to flash green once every other second, the Bluetooth keyboard is in Discovery mode.

Step 2:

Click “**BTkeybd**” icon in Home Menu of the Smartphone. (Figure 5)



Figure 5



Figure 6

Step3:

Click “**Active Keyboard**”.

Smartphone will search and connect the Bluetooth Keyboard automatically (Figure 6)



Figure 7

➤ **Reconnection**

After the connection established successfully, then you can turn “**Reconnection**” to “**On**”. This function allows the Bluetooth keyboard memorizes the last connected device, and they will pair automatically in next connection without further search. (Figure 7)

Note: Please do not turn “**Reconnection**” on before the first connection established

➤ Typing Repeat Rate

This option allows you to set the speed at which a letter, number or other character repeats when you press and hold a key. Use your stylus to drag the marker arrow toward **Fast** (to increase) or **Slow** (to decrease) the repeat rate. (Figure 8)

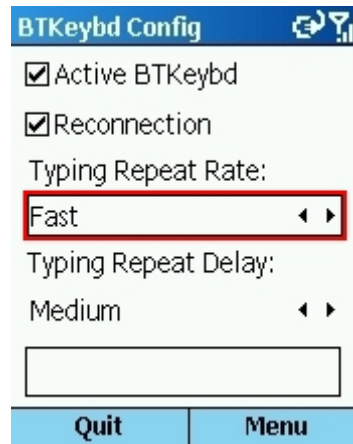


Figure 8

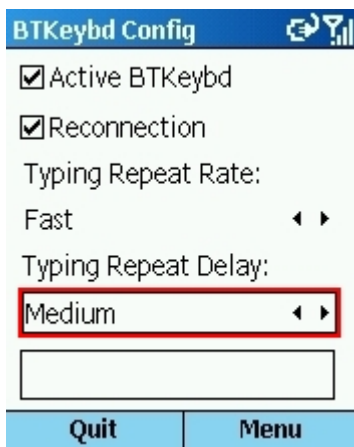


Figure 9

➤ Typing Repeat Delay

This option allows you to set the length of time before a letter, number or other character begins to repeat when you press and hold a key. Use your stylus to drag the marker arrow toward **Long** (to increase) or **Short** (to decrease) the length of the delay. (Figure 9)

➤ Keyboard Test

Test the repeat rate and delay by holding down a letter or number key on the Bluetooth keyboard. The character appears according to the setting you have chosen. Change and test these settings until you achieve the desired outcome. (Figure 10)

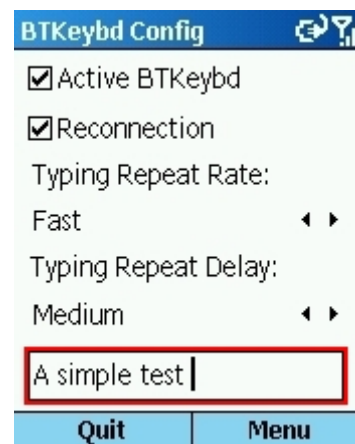


Figure 10

The Illustration of “Function” Page

➤ How to set function keys for your Bluetooth keyboard?

You should be able to set 10 different function keys (Fn -1, Fn -2 ~ Fn -0) .

Please use the [Fn] key to combine with the number [0] ~ [9] to activate the function key. (Figure 11)



Figure 11

The Illustration of “About” Page

➤ How to check the version of driver?

Please click “**About**” page. (Figure 12)

Driver version: V1.30

English Version : EN

German Version : DE

French Version : FR





Figure 12

Function key and the Combination keys

➤ **Launching Applications :**

Launch the application by shortcut.

Function	Keystroke
Launches a specific user-defined application.	[Fn] + [Number]
Launches Today	
Launches Start Menu	[Fn] + []
Launches "Inbox" application	[Fn] + [Z]
Launches "Contacts" application	[Fn] + [X]
Launches "Tasks" application.	[Fn] + [C]
Launches "Calendar" application	[Fn] + [V]

➤ **Other Function Key :**

Function	Keystroke
All keys embedded with gray characters are accessible by enabling the Num Lock setting. Enabling Num Lock emulates a 10-key keypad interface found on most standard keyboards.	[Fn] + [Caps Lock]
Left menu key	[Ctrl] + [6]
Right menu key	[Ctrl] + [7]
Dial	[Ctrl] + [T]
Hang up	[Ctrl] + [Y]
Earpiece Volume Up	[Ctrl] + [G]
Earpiece Volume Down	[Ctrl] + [H]
Record	[Ctrl] + [N]
Insert a tab	[Tab]

- **Symbol Character :**
International Character Key

Keystroke	Character
[Alt gr] + [1]	~
[Alt gr] + [4]	`
[Alt gr] + [6]	\
[Alt gr] + [7]	
[Alt gr] + [Q]	®
[Alt gr] + [W]	©
[Alt gr] + [E]	€
[Alt gr] + [Y]	¥
[Alt gr] + [P]	£
[Alt gr] + [A]	«
[Alt gr] + [S]	»
[Alt gr] + [D]	μ
[Alt gr] + [F]	Ç
[Alt gr] + [G]	ñ
[Alt gr] + [H]	¿

➤ **Latin Characters**

How to input Latin Character?

Press [Fn] + [Ctrl] at the same time, the Bluetooth keyboard is in Latin mode.

This table lists keystrokes to activate Latin functions.

Keystroke	Character
Q	á
W	à
E	ä
R	â
T	å
Y	ã
U	æ
I	ç
O	ñ
P	ø
A	é
S	è
D	ë
F	ê
G	í
H	ì
J	ï
K	î
L	ß
;	ý
'	ÿ
Z	ó
X	ò
C	ö
V	ô
B	õ
N	ú
M	ù
,	ü
.	û
/	¿

➤ **Calculator Functions :**

Press [Fn] + [Caps Lock] at the same time, the Bluetooth keyboard is in NumLock mode. This table lists keystrokes to activate calculator functions.

keystroke	Action
/	(+) Add
;	(-) Subtract
P	(*) Multiply
-	(/) Divide
=	(=) Equals
J	(1) One
K	(2) Two
L	(3) Three
U	(4) Four
I	(5) Five
O	(6) Six
8	(7) Seven
9	(8) Eight
0	(9) Nine
M	(0) Zero
,	comma
.	decimal point

Bluetooth Keyboard Status LED

When the Bluetooth keyboard is open, you can find a LED on your left side keyboard. This LED can indicate the status of the keyboard and battery

- ★ When the LED flashes **green** light once every other second, this is the state that the Bluetooth keyboard can be detected by handheld device.
- ★ When the LED flashes **green** light twice every other second, this is the status that the Bluetooth keyboard is connected by handheld device.
- ★ When the LED flashes **orange** light once or twice every other second, this is the batteries are in low level. You should change the batteries immediately.

Product Specifications

Item		Typ.	Unit
Module Size (Close)	Horizontal (H)	143	mm
	Vertical (V)	95	mm
	Depth (D)	19	mm
Module Size (Open)	Horizontal (H)	279	mm
	Vertical (V)	95	mm
	Depth (D)	13	mm
Weight	Net	200	g

Absolute Maximum Rating

Item	Min	Max	Unit	Note
Operation Temperature	-10	50	°C	Humidity Condition= 5 ~ 90%RH
Storage Environmental	-30	70	°C	Humidity Condition= 5 ~ 90%RH

Appendix A : Troubleshooting

1. How do I verify my Smartphone Operation System version?

- Tap "Start → Settings → About".
- You can see Smartphone OS software version here.

2. I am not able to install Bluetooth keyboard driver to my Smartphone?

- Please ensure the connection cable is connected between computer and Smartphone.
- Please check Microsoft "ActiveSync" software is right down on your system tray.
- Click "Start → ActiveSync" on your Smartphone"
- To synchronize Smartphone and computer to ensure connection is fine. (If you did fail to connect with your computer, please check the connection between Smartphone and PC first.)
- Follow Bluetooth keyboard user guide to repeat installation.

3. Why Smartphone has no response when I type on Bluetooth keyboard?

- Make sure the keyboard is in the connected status by LED flash time.
- Check the battery of mobile device is charged.
- Check the batteries of Bluetooth keyboard have enough power by LED color.

4. Why couldn't I remove the Bluetooth keyboard driver from my device?

- Please check if the Bluetooth keyboard still in the link mode or not. If the keyboard still connected with your device, please close the application from your device and try again.